

UNIVERSAL HELIOS GRAND HOTEL

A LOEWS HOTEL

— ROOM AND SUITE SPECIFICATIONS GUIDE —



Hotels

ARTIST CONCEPTUAL RENDERING

UNIVERSAL HELIOS GRAND HOTEL

A LOEWS HOTEL

YOUR PLACE IN THE SUN

Step into a sunlit sanctuary, where light and life abound. Rising above the waters of Celestial Park, **Universal Helios Grand Hotel, a Loews Hotel**, puts you at Universal Epic Universe.

ARTIST CONCEPTUAL RENDERING



TABLE OF CONTENTS

- 4** AMENITIES
- 5** STANDARD ROOMS
- 6** DELUXE QUEEN ROOMS
- 7** KING SUITES
- 8** KIDS' SUITES
- 9** CELESTIAL SUITES
- 10** HOSPITALITY SUITES
- 11** PRESIDENTIAL SUITES



AMENITIES

- Complimentary wireless internet access in each guest room and most common areas of the hotel
Upgrade to Premium Plus wireless internet access for optimal entertainment and business needs (fees apply)
- 300-thread-count, 100% cotton bed linens
- 55" flat screen TV with HD channels, on-demand in-room movies and video checkout (fees apply)
- Mini refrigerator
- Single cup coffee maker with gourmet coffee and assorted teas
- Convenience outlets, USB outlets, and phone jack
- Hairdryer and lighted makeup mirror
- Tablet-based controls for lights, temperature, TV, and more
- Iron, ironing board
- In-room safe large enough for a laptop, tablet, and camera
- Telephone - on desk with dual voice lines, data port, and voicemail
- Complimentary turndown service upon request
- 24-Hour room service
- Rollaway beds upon request (first come, first served basis, fees apply)
- Cribs complimentary upon request





STANDARD, SKYLINE, POOL AND THEME PARK VIEW ROOMS

- Approximately 325 Sq. ft. Queen/ 340 sq. ft. King
- 398 guest rooms / 41 club level*
- King or 2 queen beds
- King rooms accommodate 3 guests, queen rooms accommodate 5 guests.**

*Club access provided to 2 Queen rooms

**Maximum occupancies may require a rollaway for an additional fee.





DELUXE QUEEN ROOMS

- Approximately 415 square feet
- 26 guest rooms
- 2 queen beds
- Sleeper sofa
- Accommodates 5 guests
- Theme Park View Rooms available





KING SUITES

- Approximately 495 square feet
- 5 guest rooms
- 1 king bed
- Separate living area with sleeper sofa
- Accommodates 4 guests*

*Maximum occupancies may require a rollaway for an additional fee.





HOW TO TRAIN YOUR DRAGON KIDS' SUITES

- Approximately 545 square feet
- 14 guest rooms
- The standard king room and separate kids' room are connected via a shared living space
- 1 king bed / 2 twin beds
- Accommodates 5 guests (maximum 4 adults)
- Separate living area with sleeper sofa
- Theme Park View Suites available
- Optional additional connecting 2 Queen Room



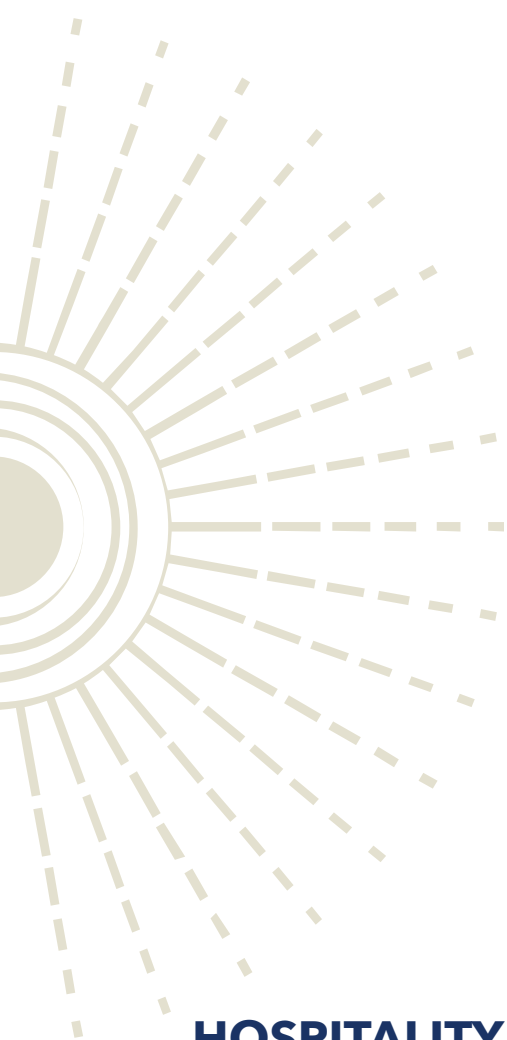


CELESTIAL SUITES

- Approximately 740 square feet
- 11 guest rooms
- 1 king bed
- Separate living area with sleeper sofa
- Theme Park View
- Accommodates 4 guests*
- Optional additional connecting 2 Queen Room

*Maximum occupancies may require a rollaway for an additional fee.

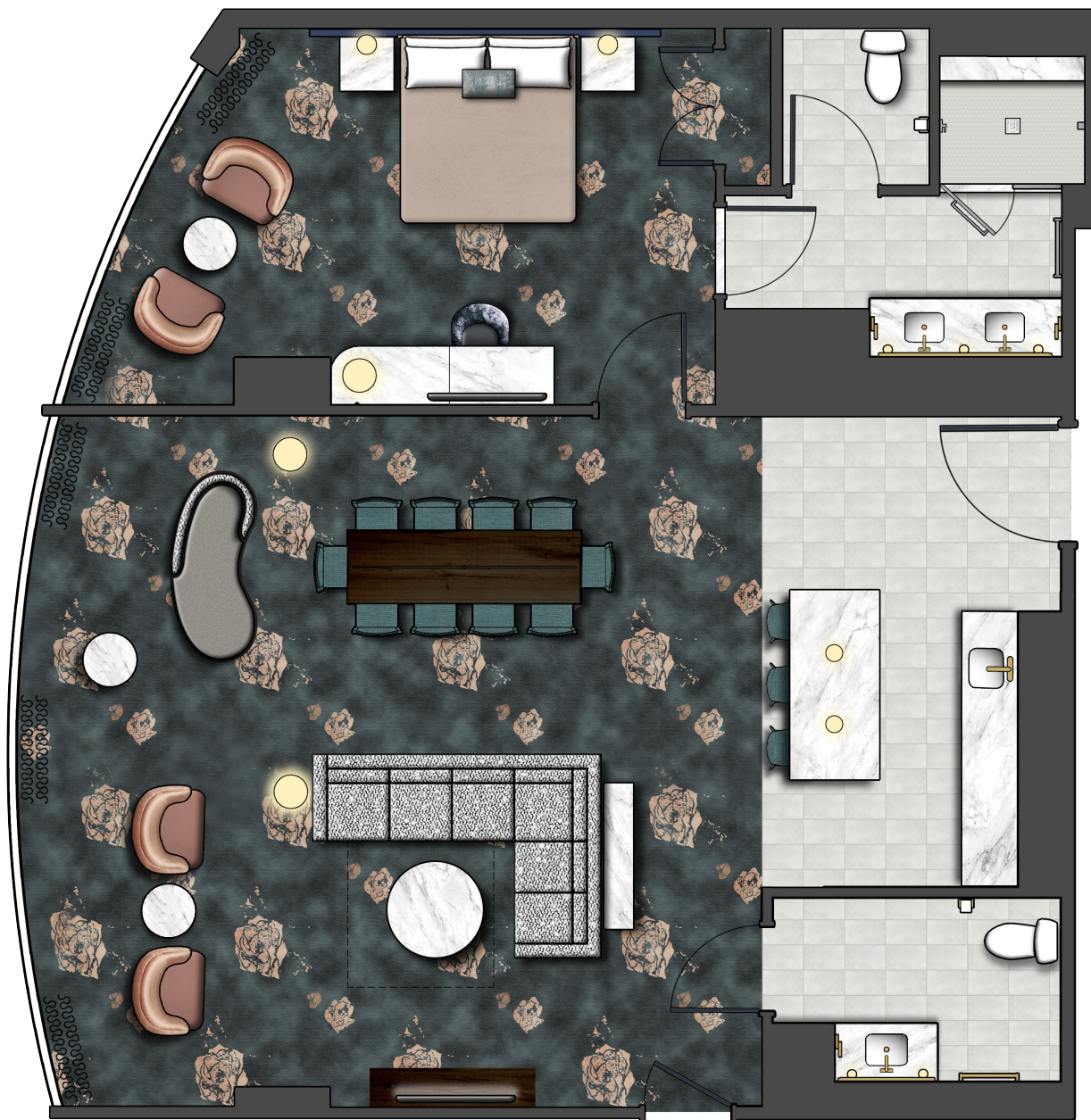


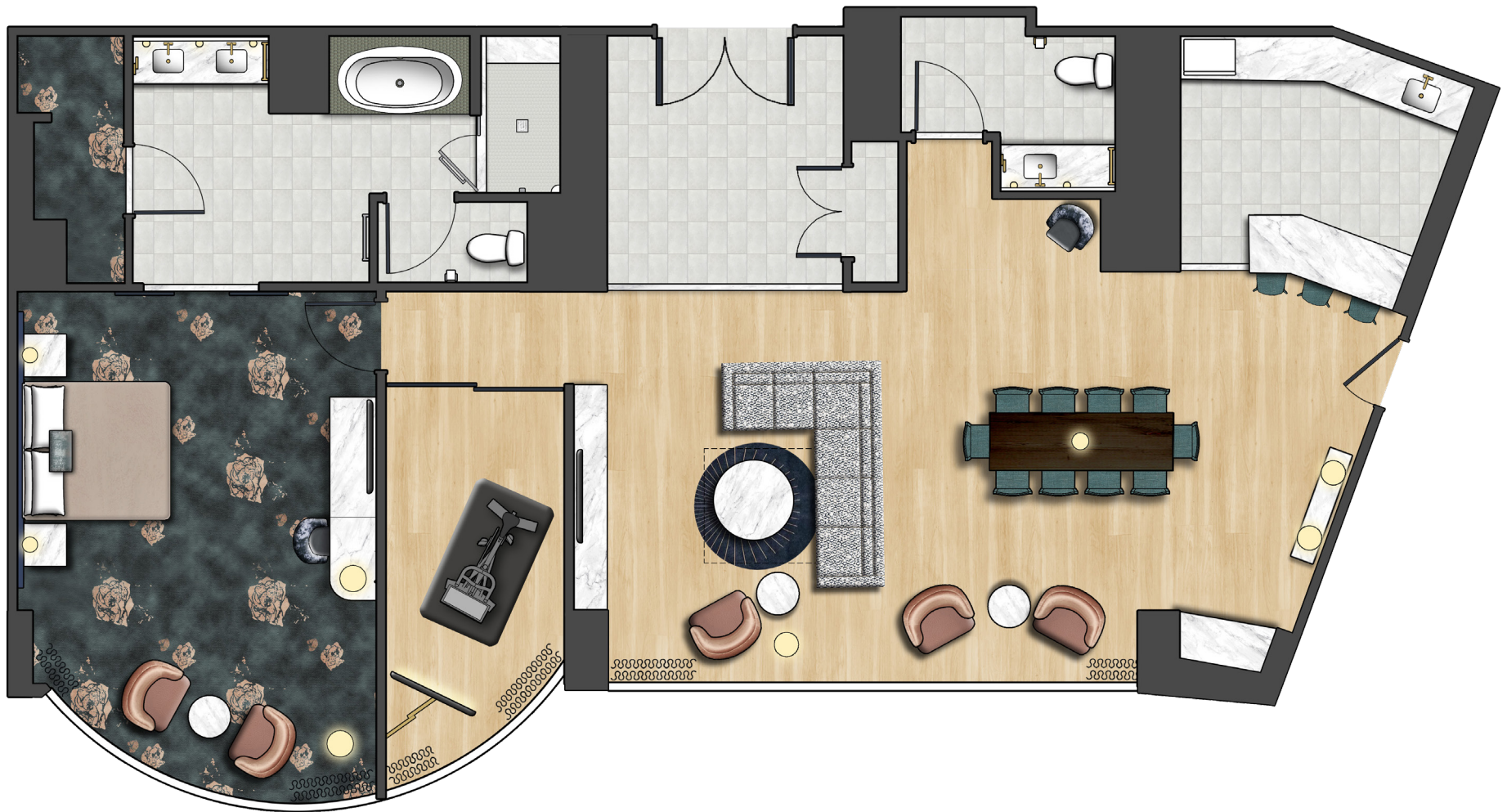


HOSPITALITY SUITES

- Approximately 1,200 square feet
- 3 guest rooms
- 1 king bed
- Separate living area with sleeper sofa
- Theme Park View
- Accommodates 4 guests*
- Optional additional connecting 2 Queen Room

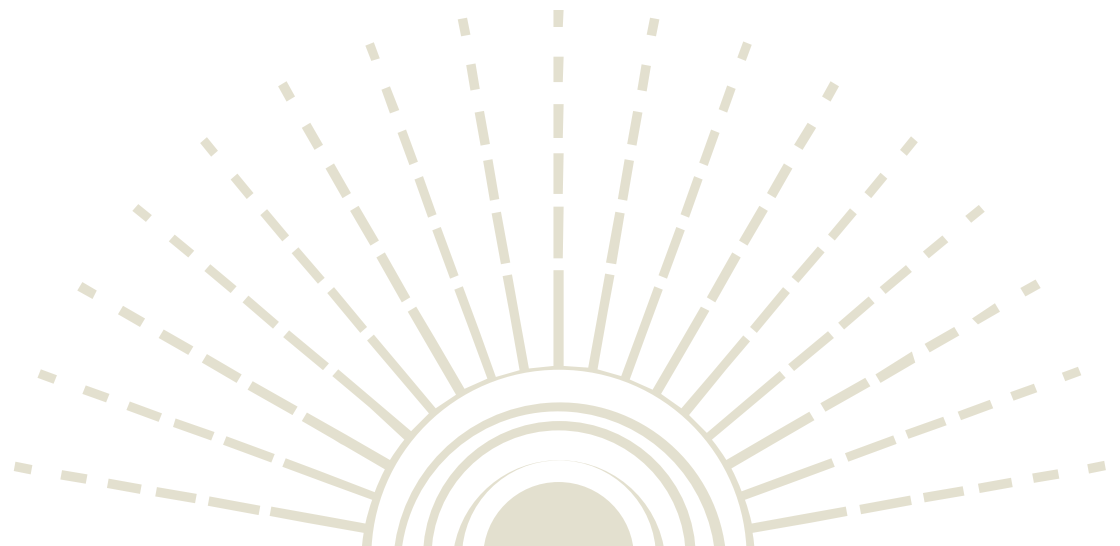
*Maximum occupancies may require a rollaway for an additional fee.





PRESIDENTIAL SUITES

- Approximately 1,500 square feet
- 2 guest rooms
- 1 king bed
- Theme Park View
- Accommodates 2 guests
- Optional additional connecting 2 Queen Room





UNIVERSAL HELIOS GRAND HOTEL

8505 S. KIRKMAN ROAD | ORLANDO, FLORIDA 32819

LOEWS HOTELS & CO

ESTABLISHED 1960